

# CHB-1010

## Weatherproof Environmental Housing including Wall Mount



INCORPORATED

Sophisticated Security and Surveillance Systems

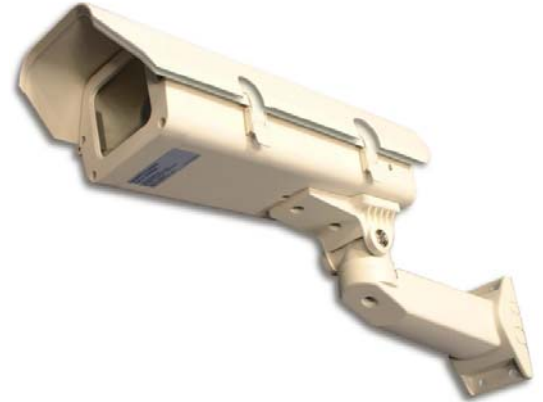
### Features

#### Environmental Housing

- ✓ For 1/3-inch or 1/2-inch format CCD cameras
- ✓ All aluminum construction
- ✓ Side opening for easy access
- ✓ Designed for indoor / Outdoor applications; for use with fixed mount or pan/tilt
- ✓ IP65 rated
- ✓ Sunshield included

#### Light Duty Wall Mount

- ✓ Die cast and aluminum
- ✓ Adjustable head for mechanical positioning of the enclosure
- ✓ Cable feed through hole conceals wiring
- ✓ 360° pan rotation, tilt angle (up or down)
- ✓ Maximum load 20lb (9.0kg)



### Description

The CHB-1010 series weatherproof environmental enclosure is constructed from die cast and extruded aluminum and is 9.5-inch (24.13cm) in length. The enclosure is for use with 1/2-inch and 1/3-inch format cameras and fixed focal length lenses or motorized zoom lenses (with or without auto-iris operation). The side-hinged lid provides easy access to the removable camera sled. This housing includes a light duty wall mount bracket. The CHB-1010 has an adjustable head for the precise mechanical positioning of the camera or enclosure.

### Specifications

Environmental Enclosure			
General		Mechanical	
Maximum Camera & lens Size	11.5" L x 3.5" W x 2.5" H (including BNC connector)	Construction	Die-cast, extruded, and sheet aluminum
Window Size (h x w)	0.11" thick tempered glass, 2.42" x 2.65"	Camera Mounting	Removable camera sled with adjustable height
Weatherproof std	IP65	Housing Mounting	Two (2) ¼-20 tapped holes
Environment	Indoor / Outdoor -10° F to 120° F	Cable entry	One .35-inch gland on rear of housing
		Rear Locking	Located at rear of housing available for security lock.
		Weight	2.70 lb
		Finish	Light-gray polyester powder coat
Light Duty Wall Mount			
General		Mechanical	
Pan Adjustment	360°	Construction	Die Cast aluminum
Tilt Adjustment	70°	Maximum Load	20 lb
Locking Method	Friction controlled through bolt tightening	Wall Mounting Method	4 Holes for fasteners of a suitable size and type. Mount to a secure solid surface.
		Weight	1.70 lb
		Finish	Light-gray polyester powder coat
Heater Kit			
I/O PCB Board	Control board with thermostat. One required when installing a heater, blower or in common.		
Heater		Blower	
Power Supply:	24 VAC or 120/230 VAC	Power Supply:	24 Vac or 120/230 VAC
Power Consumption:	20W	Power Consumption:	3.4 W
30 Watts Heater ON:	T° F < 41° F +/- 5° F	Blower ON:	T° F > 95° F +/-5° F
30 Watts Heater OFF:	T° F > 59° F +/- 5° F	Blower OFF:	T° F < 68° F +/-5° F

# CHB-1010

## Weatherproof Environmental Housing including Wall Mount



INCORPORATED

Sophisticated Security and Surveillance Systems

### Dimensions

