

# VGA-1000 (DSS VGA) Digital Surveillance System VGA Server Software



INCORPORATED  
Sophisticated Security and Surveillance Systems

**VGA-1000:** This DSS VGA software module enables operators to display and control a site's digital surveillance system (DSS) cameras on multiple VGA monitors.



DSS VGA is typically applicable in a busy control room with "video walls", where cameras from many different sources are being quickly switched on different monitors, for team investigation and action. It requires a Windows PC or DSS unit running a VGA Server.

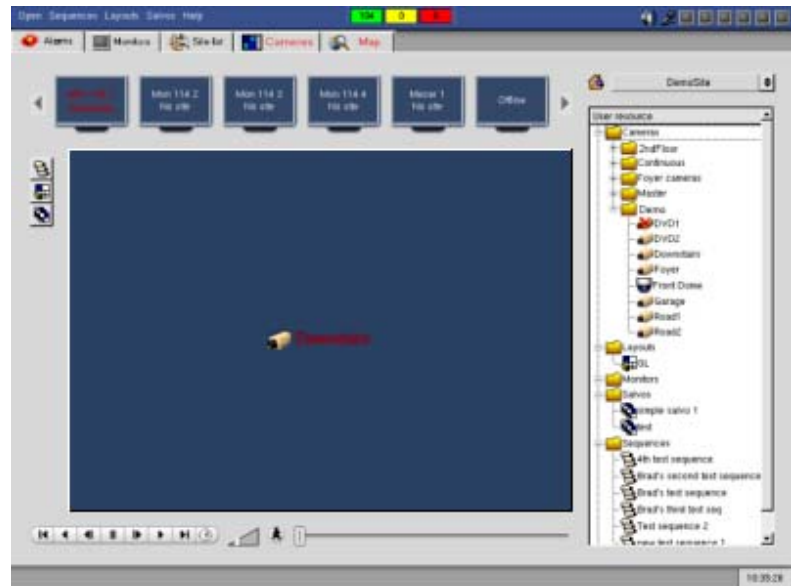
DSS VGA integrates seamlessly within the DSS Site site management software, where it appears as a desktop, accessible from the "Monitors" tab:



*DSSVGA integrates into DSS Site as a tabbed desktop*

## features

- ✓ Manipulate site camera displays on monitors
- ✓ Drag cameras from Resource panel
- ✓ Switch and resize cameras
- ✓ Replay by camera
- ✓ Run camera sequences
- ✓ Switch layouts
- ✓ Run layout sequences (salvos)
- ✓ Set up camera sequences, layouts and layout sequences (salvos)



*DSS VGA interface*

## Features

- ✓ Quick manipulation of camera displays on VGA monitors
- ✓ Drag-and-drop functions
- ✓ Set up and run camera sequences, screen layouts, and layout sequences (salvos).
- ✓ 1-click switching between Monitors desktop and other DSS Site desktop

Once the responding Dome camera displays live, the Operator may override its automatic responses and assume manual control, to manually track an intruder.